

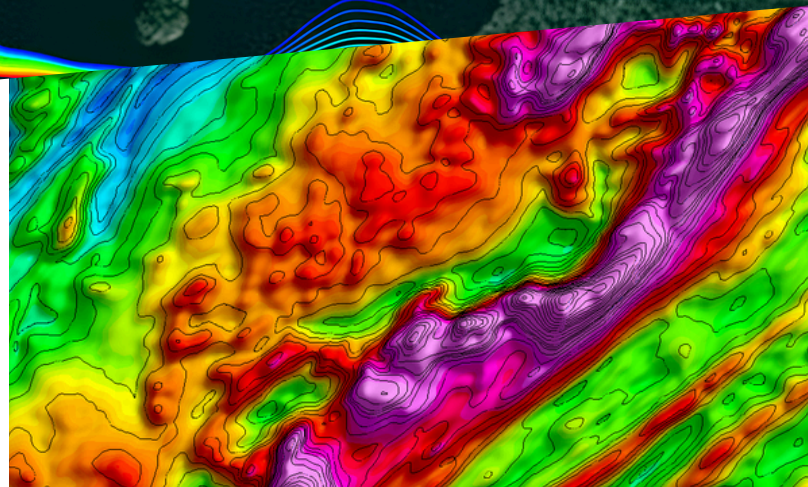


## AXIOM GROUP: YOUR TRUSTED PARTNER IN GEOPHYSICAL CONSULTING

Embark on a journey of discovery and innovation with **AXIOM GROUP**'s premier geophysical consulting services. Our expert team provides unparalleled advice, analysis, and solutions that delve deep into the Earth's mysteries using state-of-the-art geophysical methods.

### WHY CHOOSE AXIOM GROUP?

**Expert Guidance:** Benefit from the expertise of our seasoned consultants who specialize in revealing the Earth's subsurface, structures, composition, and dynamics. Our team brings a wealth of knowledge to industries such as mineral exploration, environmental assessment, geothermal energy, civil engineering, and natural hazard assessment.

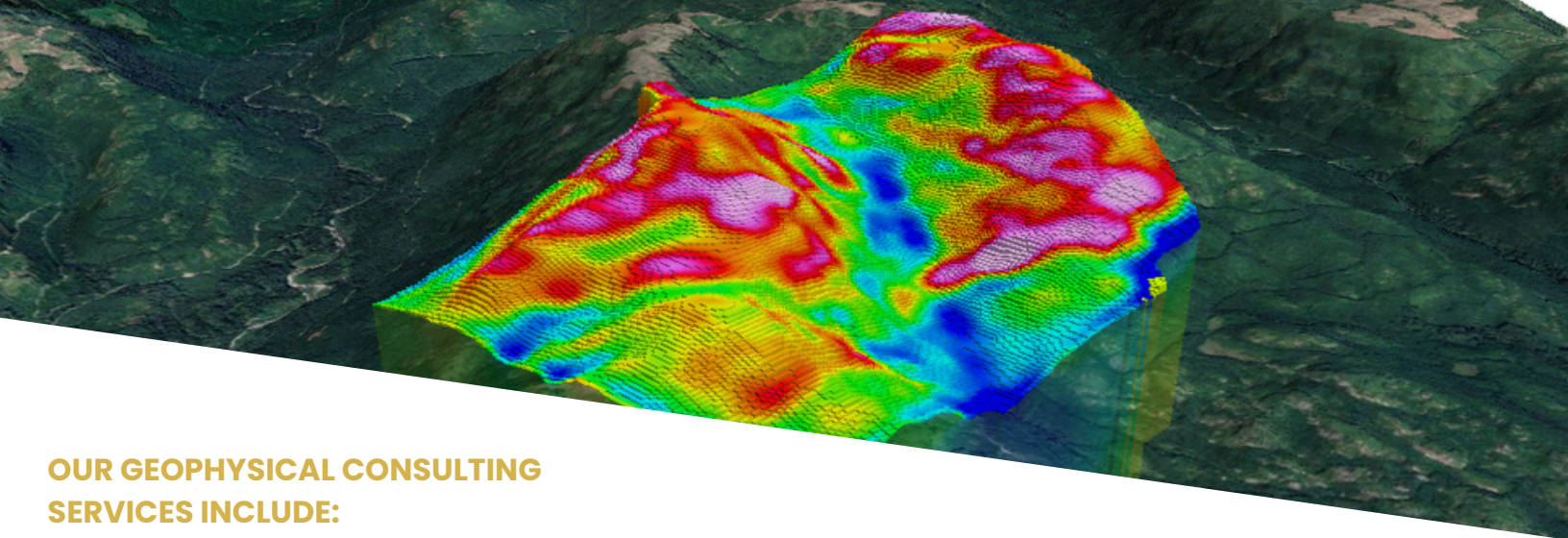


**Cutting-Edge Technology:** We utilize various geophysical survey methods, including electromagnetic, gravity, and magnetic surveys, and ground-penetrating radar to interpret data with precision and accuracy. This enables us to provide valuable insights that drive informed decision-making for your projects.

**Customized Solutions:** Our geophysical consulting services are tailored to meet your specific needs, whether you are mapping geological structures, delineating targets, assessing environmental impacts, or executing a regional survey project. We are committed to delivering solutions that help you mitigate risks, optimize resource exploration, and make strategic decisions based on reliable scientific analysis.







## OUR GEOPHYSICAL CONSULTING SERVICES INCLUDE:

- **Project Design & Pre-Survey Modelling:** Develop customized project designs and conduct pre-survey modelling to optimize data collection methods and ensure project success.
- **Project Integration & Interpretation:** Seamlessly integrate and interpret geophysical data to provide valuable insights and actionable recommendations for your projects.
- **Software & Computing Resources:** Utilize innovative software and computing resources to analyze data efficiently and accurately, enabling informed decision-making.
- **Compilation & Reprocessing:** Reprocess and compile legacy geophysical data with new geophysical software so we can extract more information from your data to aid your exploration project.
- **Target Delineation:** Integrate geological and geophysical data to identify, prioritize, and delineate drill targets, optimizing exploration outcomes.

## UNLOCK THE POTENTIAL OF YOUR PROJECTS

Collaborate with Axiom Group to elevate your exploration project. Our geophysical consulting team will work with you at every step providing technical expertise needed to achieve your desired goal. Allow us to stand by your side as a dependable partner in navigating the intricacies of the exploration, enabling you to reach your objectives with certainty.

Get in touch now to explore how **AXIOM GROUP**'s geophysical consulting can revolutionize your projects and unlock a realm of possibilities. Join forces with us to uncover Earth's mysteries and forge a path towards a more promising tomorrow.

