



A IOM
GROUP

**INDUSTRY DRIVEN,
CLIENT PROVEN.**



About **AXIOM GROUP**

Established in 2011, AXIOM GROUP is an employee-owned company with its corporate head office located in Saskatoon, Saskatchewan.

We build enduring partnerships through transparency and ethical practices that offer you consistent guidance, peace of mind, and superior results throughout your project's development and beyond.

Your project goals drive our mission, and we tailor our high-quality products and services to meet or

exceed your individual requirements in exploration, geophysics, geomatics, environment, energy and data analytics.

Leveraging the latest technologies and a pioneering team of geoscientists and experts, we turn your complex challenges into the next big breakthroughs in your field.

INDUSTRY DRIVEN, CLIENT PROVEN.





Exploration & Geological Field Services

Our professional team prides itself on their ability to design, operate, manage and optimize highly successful exploration programs focused on any commodity. Our team is well-versed with projects focusing on: **Ag, Au, Co, Cu, Li, Ni, Ti, U, Zn, Diamonds, PGEs and REEs**

AXIOM GROUP's team has extensive experience managing projects worldwide. With a diverse experience base for logistical operations, we can better adapt to changing conditions and uncertain parameters to maximize cost-effectiveness in the field.



1 Exploration program design, project management and implementation

2 Drill target generation and design

3 Geological mapping

4 Portable XRF and ioGAS geochemical analysis

5 Prospecting, field sampling and claim-staking

6 Core logging and sampling



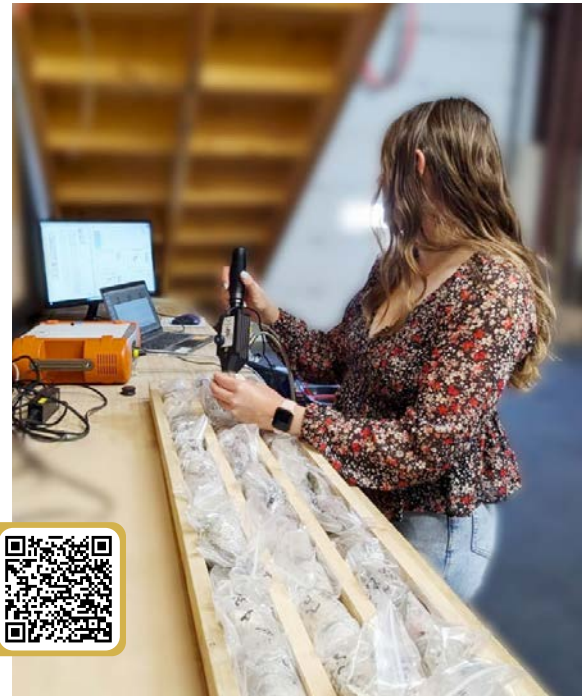
Learn more about
our Geological
Field Services

INDUSTRY DRIVEN, CLIENT PROVEN.

Advanced Exploration Field Technologies

AXIOM GROUP leverages cutting-edge field technologies to deliver rapid, high-precision mineral exploration data. By utilizing portable, real-time analytical tools, we enhance efficiency, improve decision-making, and accelerate exploration timelines. These technologies provide critical geochemical, mineralogical, and elemental insights, helping you better understand controls on mineralization and advance your project to the next stage.

- 1** XRF (X-ray Fluorescence) Analyzer – Rapid, non-destructive multi-element analysis for soil, rock, and drill core samples
- 2** RS-230 Spectrometer – High-sensitivity gamma-ray spectrometry for uranium and rare earth element exploration
- 3** LIBS (Laser-Induced Breakdown Spectroscopy) – High-precision detection of light elements, including lithium and REEs
- 4** TerraSpec 4 and aiSIRIS – Hyperspectral mineral analysis for core and field prospecting with automated mineral interpretation
- 5** Core Cutting Trailer – A turn-key solution for efficient and precise core cutting, expediting post-logging workflows





Airborne Geophysics

AXIOM GROUP specializes in airborne geophysical surveys, providing high-resolution data acquisition for exploration across mineral, oil & gas, and groundwater applications. Our airborne services include Time-Domain Electromagnetics (TDEM), Gravity, Magnetic (helicopter and UAV-based), and Radiometric surveys. These methods allow for large-scale data collection, improving the identification of geological structures, mineralization zones, and anomalies.

1 Xcite™ TDEM by NRG

2 Nx™ Total Field Gravity by NRG

3 Heliborne and UAV Total Field Magnetics

4 Heliborne Gradient Magnetics

5 Heliborne and UAV Radiometrics



Learn more about our
Airborne Geophysical
Technologies

INDUSTRY DRIVEN, CLIENT PROVEN.

Ground Geophysics

AXIOM GROUP offers a range of ground geophysical services to conduct subsurface exploration. Our capabilities include Induced Polarization (IP), Ground Gravity, Ground Penetrating Radar (GPR), various Ground Electromagnetic (EM) methods, and Borehole EM. These techniques provide high-resolution geophysical data for mineral exploration, oil & gas investigations, and groundwater studies.

1 Gravity

2 Time Domain and
Frequency Domain EM

3 Borehole EM

4 Magnetics

5 GPR

6 Induced Polarization





Database Management & GIS Services

AXIOM GROUP has an experienced team of professionals that can accurately provide any level of project management, supervision, field work, report generation or data compilation.

Some of the services include data compilation, digitization, and interpretation; assessment and technical reporting maps; and the development and implementation of policy and procedures. AXIOM GROUP's specialized team has your needs covered.

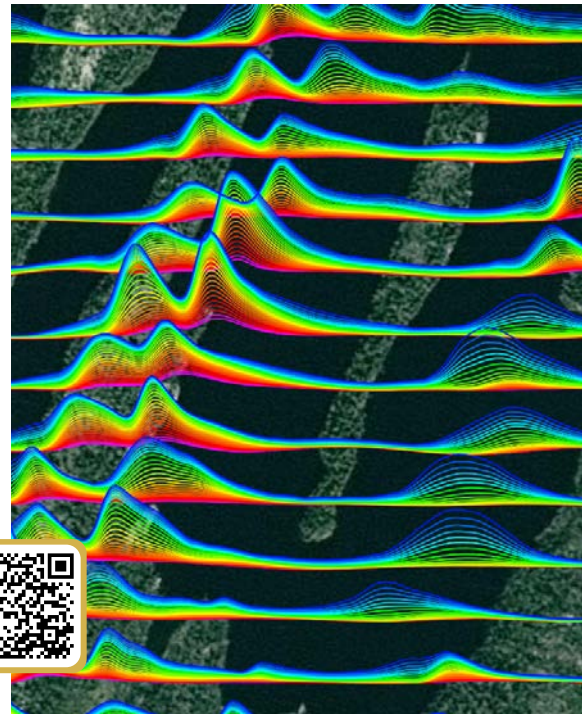
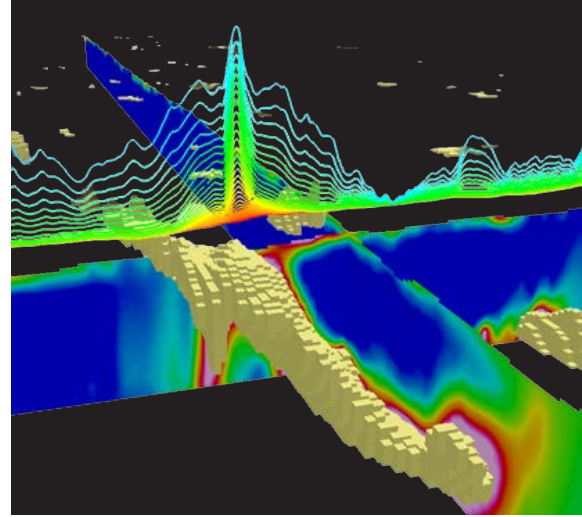
- 1** Data compilation, conversion, and interpretation
- 2** Database management and data validation
- 3** Technical and promotional map generation
- 4** Historical data verification and analysis
- 5** Georeferencing and digitizing

Geophysical Consulting Services

AXIOM GROUP delivers integrated geophysical solutions to enhance exploration programs through data-driven analysis and strategic planning. We integrate geological, geochemical, and geophysical datasets in 3D to deliver detailed modeling. Our services include customized survey design, advanced software for data processing and visualization, and target delineation to prioritize drilling efforts. With expert field support and project management, we ensure high-quality data acquisition and interpretation to optimize exploration outcomes.

- 1 Historical data evaluation and reprocessing
- 2 Geological, geophysical and geochemical data integration

- 3 Inversion and/or forward modelling
- 4 Data interpretation and target generation





Project Management

AXIOM GROUP has developed a “one face-ten brains” system that provides an efficient personnel solution for junior exploration companies. Providing all aspects of project management from the executive level down to field staff and everything in between.

- 1 Asset management
- 2 Technical advisory (geological, geophysical, environmental)
- 3 Program management
- 4 Procurement
- 5 Marketing, communications and administration



Learn more about our
Project Management
& Advisory Services

INDUSTRY DRIVEN, CLIENT PROVEN.

Claims Management & Technical Reporting

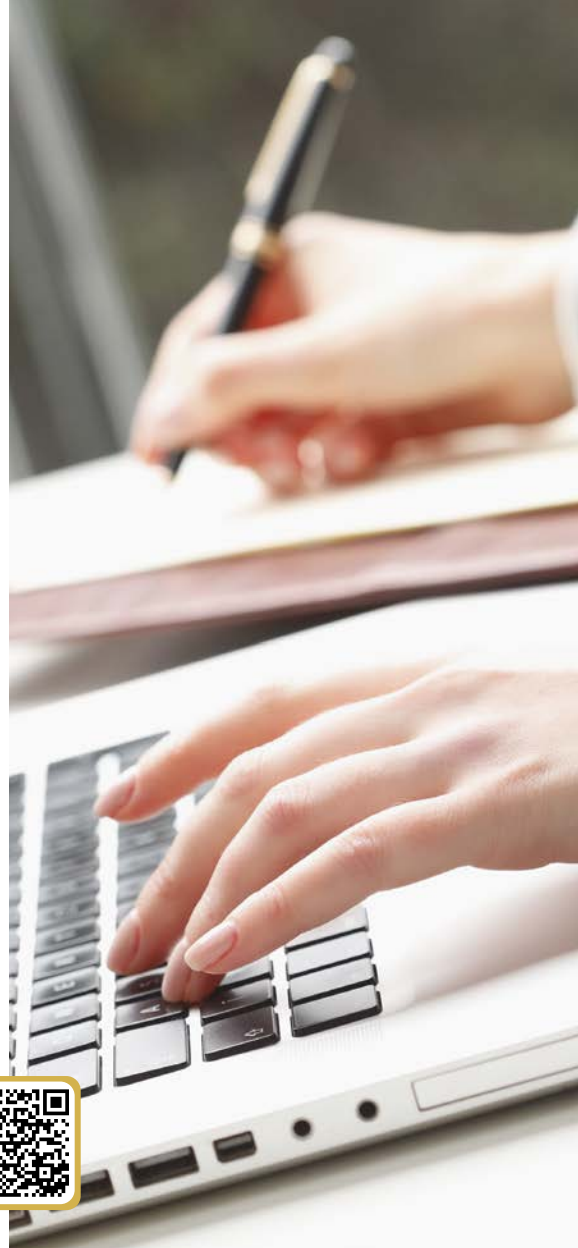
At AXIOM GROUP, we understand the critical importance of claims management and technical reporting in the realm of mineral exploration. Our integrated services deliver seamless, end-to-end solution tailored to your exploration needs. AXIOM specializes in strategically managing and protecting your mineral rights, ensuring your claims remain in good standing.

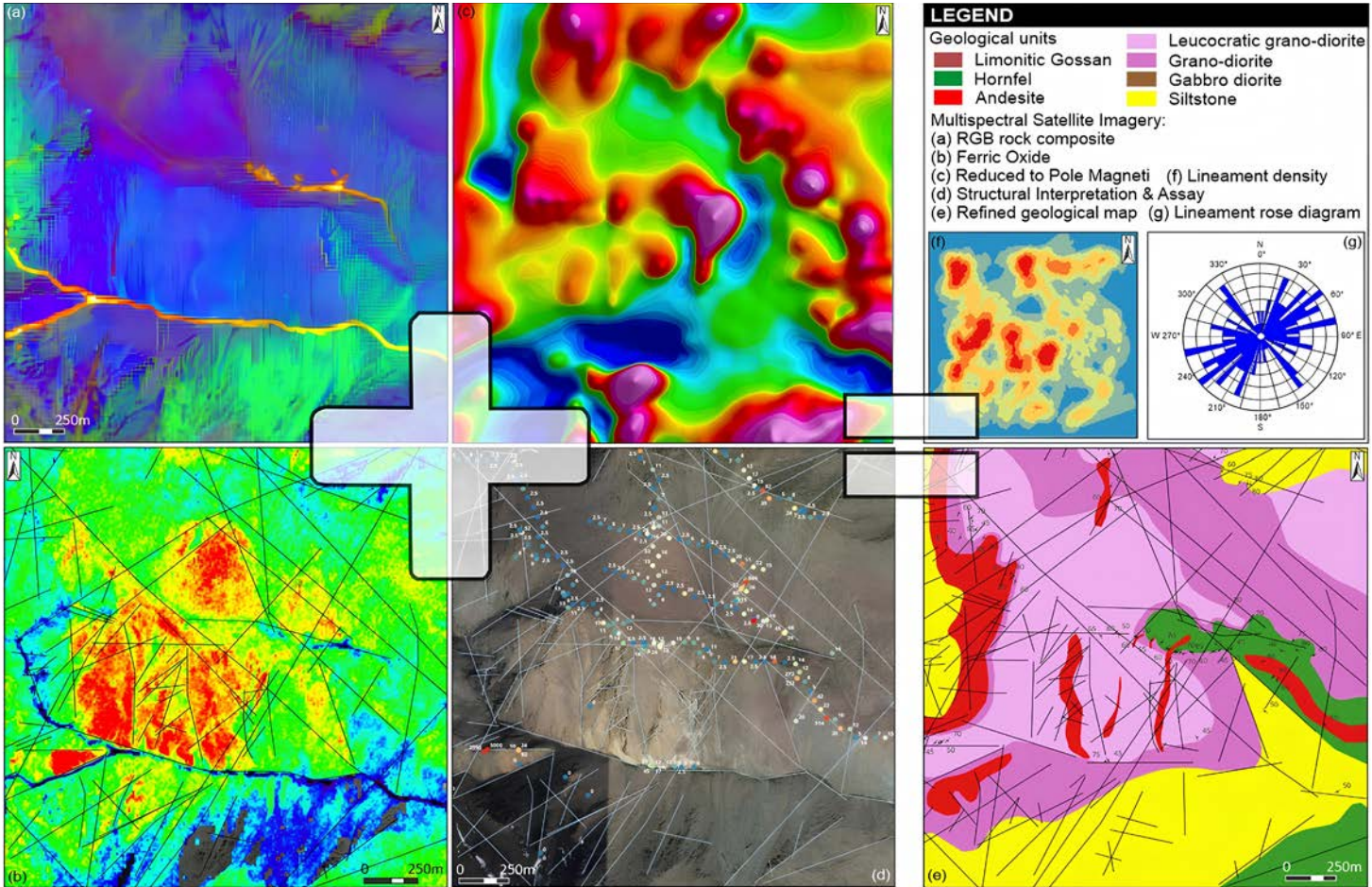
1 Claim portfolio management and monitoring services

3 Advocacy and liaison: let us help you navigate complex regulatory challenges and ever evolving government regulations

2 Claims services on demand: flexibility on our full suite of services, when you need it; includes claim renewals, extensions, transfers, report filing, and more

4 Report writing services: Our team simplifies the complexities of report preparation, offering services for: Assessment Reports, NI 43-101, SK-1300, JORC, and custom reports





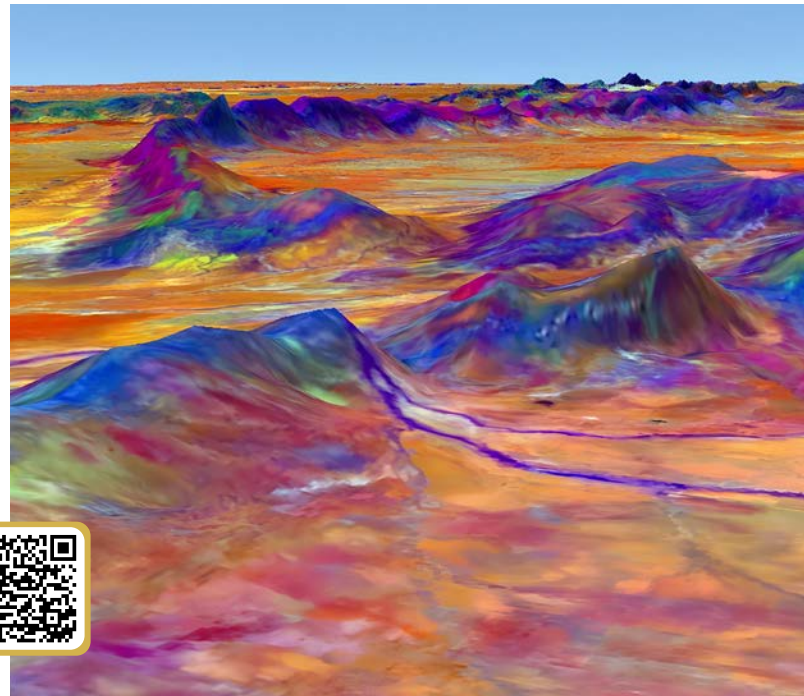
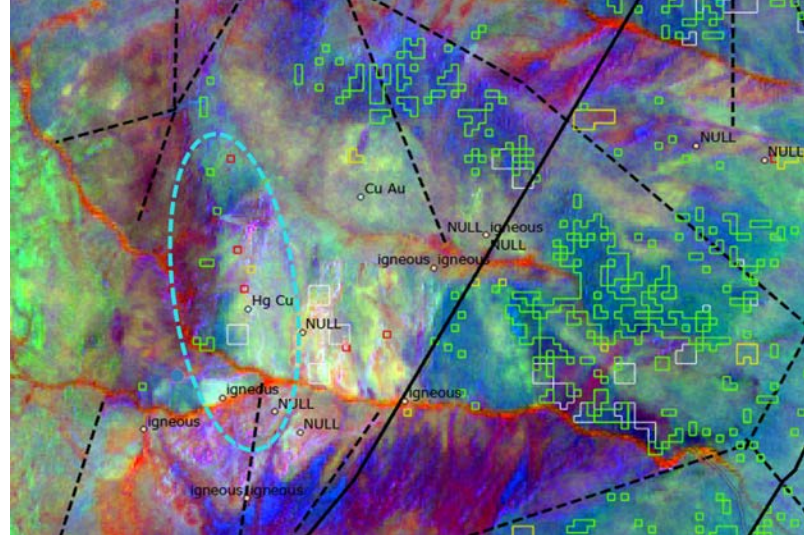
Spectral Satellite Analysis (Radar, Sentinel, Aster)

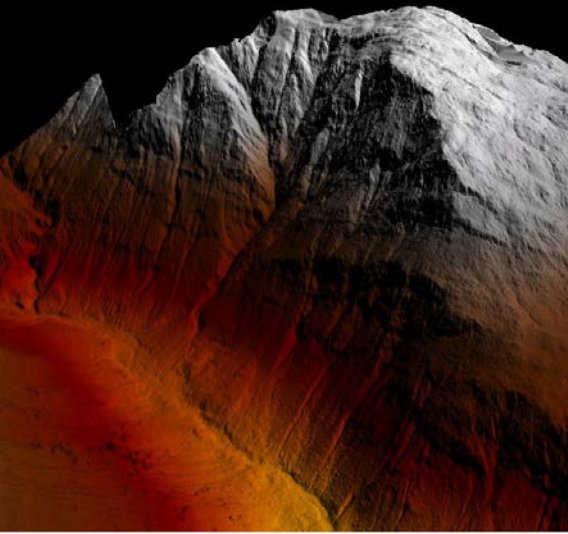
By combining modern satellite remote sensing techniques to analyze structure, vegetation, alteration, and ground movement, complex anomalies covering large areas can be quickly and effectively identified. In addition to its environmental applications, this non-invasive exploration approach combines and visualizes existing geochemical, geophysical, and structural datasets with processed satellite imagery. In house professional analysis can be applied to correlate these surface and subsurface features, further improving mineral target identification and geologic precision.

- 1 Satellite multispectral and hyperspectral analysis
- 2 Soil chemistry including drought and moisture content
- 3 Vegetation monitoring, health, reclamation and remediation

AXIOM GROUP

Learn more
about Spectral
Satellite Analysis

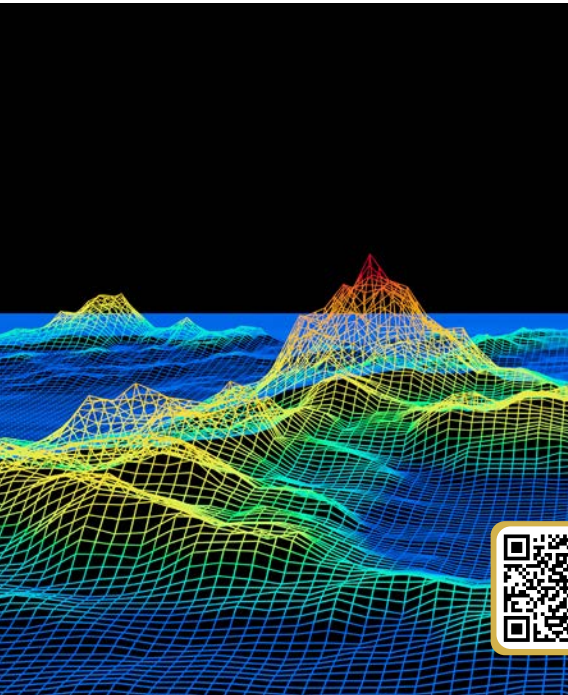




Remote Sensing Services

AXIOM GROUP specializes in LiDAR and Photogrammetry for high-precision geospatial mapping and analysis. Our airborne and UAV-based services provide detailed topographic and structural data for applications in mineral exploration, environmental monitoring, infrastructure planning, and forestry management. LiDAR technology enables high-resolution terrain modeling, even in dense vegetation, while Photogrammetry offers accurate 3D reconstructions and orthomosaic imaging. These advanced remote sensing methods allow for large-scale, cost-effective data acquisition, enhancing project planning, resource evaluation, and geological interpretation.

- 1 Mineral exploration and geological mapping
- 2 Environmental monitoring and land use planning
- 3 Infrastructure and construction planning
- 4 Forestry and vegetation analysis
- 5 Hydrology and flood risk assessment
- 6 Archaeological and cultural site mapping



Learn more about
our Remote
Sensing Services

INDUSTRY DRIVEN, CLIENT PROVEN.



AXIOM EXPLORATION



BoxScan Core Logging

BoxScan is a cutting-edge, multi-sensor core logging system that enhances efficiency, accuracy, and data consistency in mineral exploration. Traditional core logging methods can be time-consuming, resource-intensive, and prone to human bias. BoxScan overcomes these challenges by providing high-resolution, standardized datasets that accelerate decision-making and reduce costs.

By capturing precise geological data at the drill site, BoxScan enables real-time analysis, eliminating the need for re-logging while improving project efficiency and data reliability.

- 1 No-bias data acquisition for rapid decision-making
- 2 Ideal tool for historical re-logging programs
- 3 Data includes pXRF, Hyperspectral, Magnetic susceptibility; RQD
- 4 AI-driven modelling and analysis for deeper insights
- 5 Cloud-based or local storage for secure data management
- 6 Standardized, non-subjective data for seamless integration



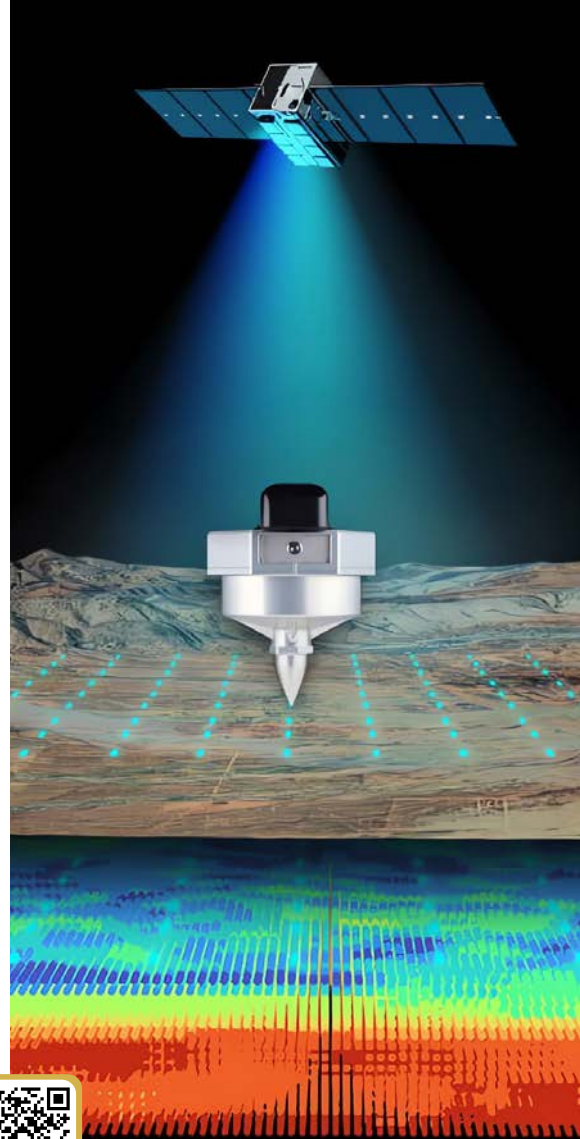
Learn more
about BoxScan

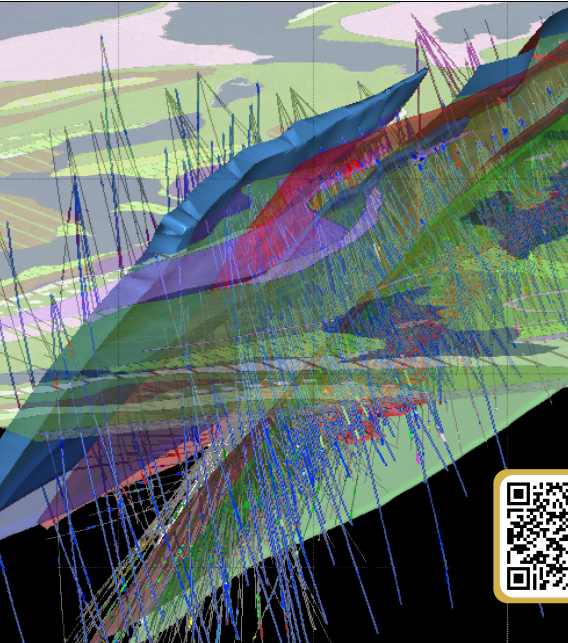
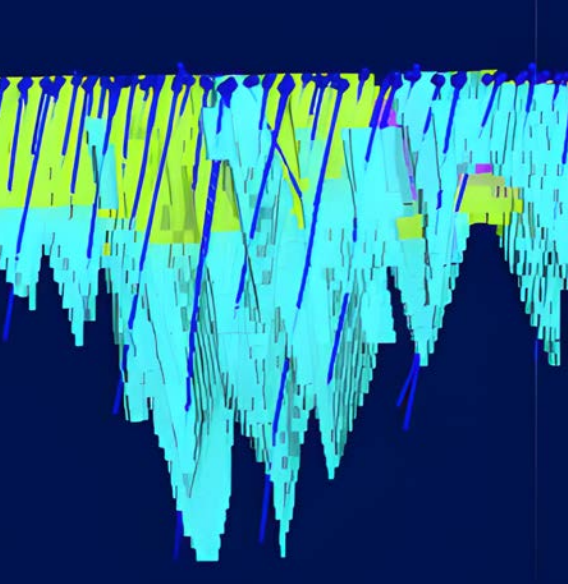
INDUSTRY DRIVEN, CLIENT PROVEN.

Ambient Noise Tomography (ANT)

AXIOM GROUP proudly deploys Exosphere ANT, a next-generation seismic exploration technology developed by Fleet Space Technologies. AXIOM leverages Ambient Noise Tomography (ANT) to generate real-time 3D subsurface models, delivering high-resolution geological insights with unmatched speed and efficiency. Exosphere ANT utilizes passive seismic technology, capturing ambient noise to map the subsurface. With direct-to-satellite connectivity, this system enables near-instantaneous data processing, reducing exploration timelines and enhancing decision-making in even the most challenging environments.

- 1** Real-time data processing with direct-to-satellite connectivity
- 2** High sensitivity and depth—imaging up to 5 km below the surface
- 3** Rapid deployment and survey turnaround in as little as 5-7 days with velocity models delivered within 48 hours of survey completion
- 4** Low environmental impact by minimizing invasive techniques
- 5** Cost-effective exploration reducing personnel and drilling needs
- 6** Optimized for remote and harsh environments with minimal infrastructure





Resource Modelling & Estimation

Accurate structural and lithological models are often integral to successful drill target generation, mine development and mineralization emplacement definition.

AXIOM GROUP uses advanced geostatistical methods and modelling software combined with their collective geological understanding to ensure the accuracy of their resource models and estimations.

- 1 3D Lithological / Structural / Geochemical / Mineralization Model Generation
- 2 Resource modelling, estimation and classification
- 3 Geostatistical analyses
- 4 Leapfrog and ioGAS modelling software
- 5 NI 43-101, SAMREC, and JORC compliant



Learn more about our
Resource Modelling &
Estimation Services

INDUSTRY DRIVEN, CLIENT PROVEN.

Exploration & Environmental Permitting

AXIOM GROUP's permitting team takes a proactive and strategic approach to navigating regulatory frameworks and ensuring efficient permit acquisition. From identifying required permits to defining realistic timelines, we manage the permitting process in alignment with industry standards and regulatory requirements.

Our services mitigate project risks by actively engaging with regulators, identifying impacted stakeholders and rightsholders, and providing ongoing environmental support throughout project activities. By prioritizing seamless permitting processes, we empower your project to progress as scheduled, minimizing potential disruptions and ensuring long-term success.

- 1** Scope assessment to determine required permits
- 2** Develop a realistic timeline based on government processing times
- 3** Advise clients on required activities, such as stakeholder and rightsholder engagement
- 4** Submit permit applications efficiently and in accordance with requirements
- 5** Facilitate government communication to keep the process moving
- 6** Provide ongoing environmental support to ensure compliance with permit requirements





Environmental Impact Assessment & Monitoring

AXIOM GROUP excels in Environmental Impact Assessments and Environmental Monitoring Programs for various industries. Our skilled team provides critical analysis, field services, and administrative support, ensuring compliance with environmental standards. Our services span from permitting support, environmental baseline surveys, and water quality sampling to remediation and emergency response plans, focusing on environmental, social, and economic sustainability while adhering to strict regulatory requirements.



- 1 Comprehensive Environmental Impact Assessments for projects
- 2 Detailed scoping and critical analysis in Environmental Monitoring Programs
- 3 Water and soil quality sampling, including toxicity analysis
- 4 Effective emergency response planning and environmental liability management
- 5 Quarterly reporting and scientific analysis for regulatory compliance
- 6 Surface and groundwater management



Learn more about
our Environmental
Services

INDUSTRY DRIVEN, CLIENT PROVEN.

Contaminated Sites & Pipeline Monitoring

At AXIOM GROUP, we specialize in managing contaminated sites and offering advanced Pipeline Monitoring Programs. Our services include field investigations, risk assessments, and utilizing cutting-edge technology for pipeline evaluation. We focus on reducing environmental liabilities and ensuring compliance with applicable regulations, and providing a holistic approach to environmental safety and regulatory adherence.

- 1** Comprehensive management of contaminated industrial sites
- 2** Orphan well management, gas migration tests, and site supervision
- 3** Phase I and II Environmental Site Assessments and reporting
- 4** Advanced pipeline monitoring with AI and deep machine learning
- 5** Data interpretation, analysis, and regulatory reporting
- 6** Exposure modelling, corrective action plans, and human and ecological risk assessment





ESG Strategy & Services

In the evolving landscape of the resource development industry, AXIOM GROUP leads the charge to demystify the ESG landscape and focus on what is material to stakeholders involved. This includes: completing initial materiality assessments; Greenhouse Gas (GHG) inventory assessments for Scope 1, 2, and 3 emissions; and, tracking that is compliant with international standards and guidelines (ISO, GRI, SASB, & GHG Protocol). These services support de-risking projects from cradle to grave for investors, land package acquisitions, communities and industry, and embracing stakeholder primacy actions.

1 Fostering strong relationships with local community throughout the project's lifecycle

2 Materiality assessments and steering committee facilitation

3 Developing proactive corporate strategies, governance and plans (CSR, environment, engagement, sustainability and communication)

4 Greenhouse Gas (GHG) inventory and assessment (Scope 1,2,3) and Carbon mitigation and offsetting

5 Stimulating local economies and enhancing community skills through inclusive job creation and training

6 Access to an ESG platform for transparent tracking of emissions and other KPIs for exploration, participation or impact benefit agreements

Regulatory, Engagement & Environment Services

AXIOM GROUP builds bridges between community and industry by coordinating project activities in a schedule that support best practices for engagement and regulatory compliance. At AXIOM, we have the technical experience to conduct baseline studies, develop permitting and compliance plans, establish community profiles for effective engagement and consultation strategies, and support corporate governance and environmental best practices for proactive project management.

Social license to operate requires relationship-building, clear communication, transparency and accountability. Technical expertise in addition to our team of communication specialists supports the work of our clients with the development of professional presentation materials, notices and tools to enhance project communications, meet reporting requirements and related timelines.

1 Permitting and Compliance Plans

2 Environmental Baseline and Impact Assessment Studies

3 Communication and Presentation Material Development

4 Indigenous and Community Engagement Plans

5 Social (E&S) Baseline Studies & Community Profiles





AXIOM GROUP

Suite 101, 3239 Faithfull Ave,
Saskatoon, Saskatchewan S7K 8H4

PHONE : 1-306-986-5716

EMAIL : INFO@AXIOMEX.COM
WEBSITE : AXIOMEX.COM



INDUSTRY DRIVEN, CLIENT PROVEN.