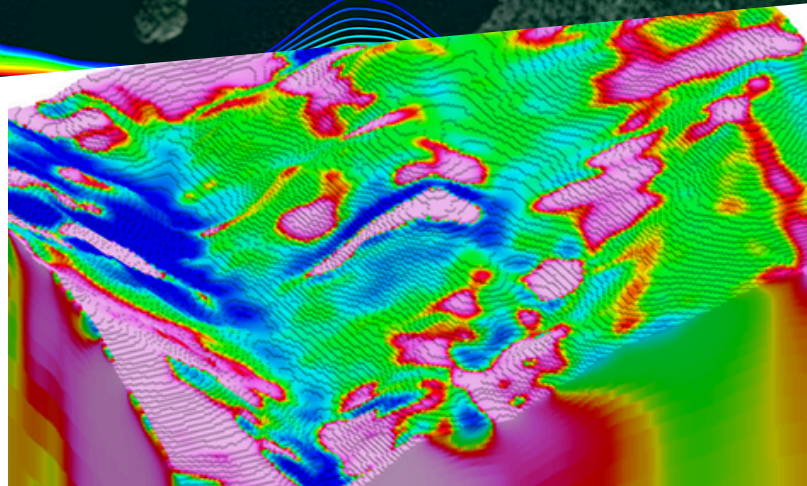


AXIOM GROUP: YOUR TRUSTED PARTNER IN GEOPHYSICAL CONSULTING

Embark on a journey of discovery and innovation with **AXIOM GROUP's** premier geophysical consulting services. Our expert team is dedicated to providing informative advice, analysis, and solutions, assisting your team in interpreting and modelling complex subsurface geology.

WHY CHOOSE AXIOM GROUP?

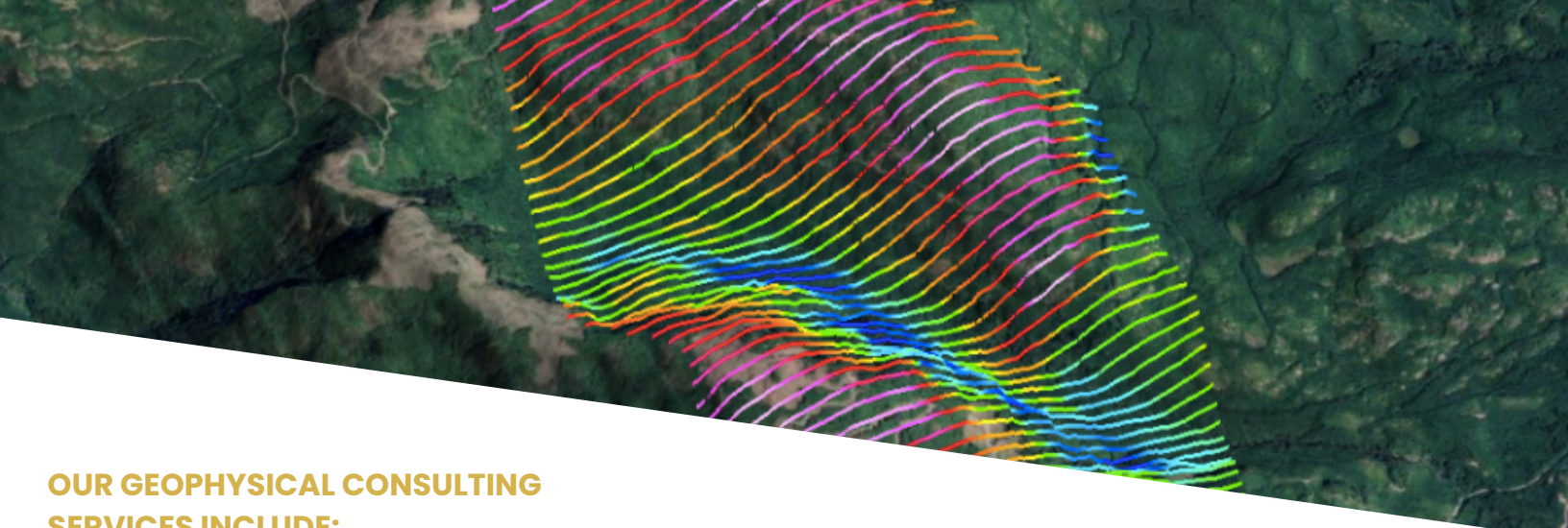
Expert Guidance: Benefit from the expertise of our seasoned consultants, who specialize in revealing the Earth's subsurface structures, composition, and dynamics. Our team brings a wealth of knowledge to industries such as oil and gas exploration, mining, environmental assessment, geothermal energy, civil engineering, and natural hazard assessment.



Cutting-Edge Technology: We utilize advanced equipment and techniques, including seismic, electromagnetic, gravity, and magnetic surveys, and ground-penetrating radar, to gather and interpret data with precision and accuracy. This enables us to provide valuable insights that drive informed decision-making for your projects.

Customized Solutions: Our geophysical consulting services are tailored to meet your specific needs, whether you are mapping subsurface structures, locating resources, assessing environmental impacts, or identifying potential hazards. We are committed to delivering solutions that help you mitigate risks, optimize resource exploration, and make strategic decisions based on reliable scientific analysis.





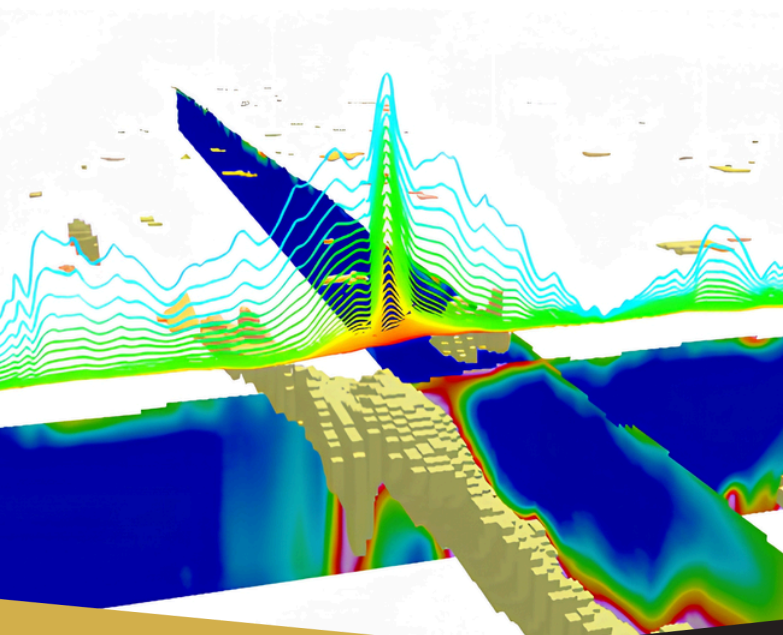
OUR GEOPHYSICAL CONSULTING SERVICES INCLUDE:

- **Project Integration & Interpretation:** Seamlessly integrate and interpret geophysical data to provide valuable insights and actionable recommendations for your projects.
- **Project Design & Pre-Survey Modelling:** Develop customized project designs and conduct pre-survey modelling to optimize data collection methods and ensure project success.
- **Software & Computing Resources:** Utilize cutting-edge software and computing resources to analyze data efficiently and accurately, enabling informed decision-making.
- **Compilation & Visualization:** Compile and visualize geophysical data in a clear and concise manner to enhance understanding and facilitate communication within your team.
- **Target Delineation:** Identify and delineate exploration targets precisely, leveraging geophysical methods to optimize resource discovery and project outcomes.
- **Drill Targeting:** Use geophysical data to effectively target drilling locations, maximizing the potential for successful exploration and resource extraction.

UNLOCK THE POTENTIAL OF YOUR PROJECTS

Our geophysical consulting services are designed to provide you with the insights and expertise needed to advance your projects with confidence. As your trusted partner, we help you navigate the complexities of the Earth's subsurface, empowering you to make informed decisions and achieve your goals.

Contact us today to learn how **AXIOM GROUP'S** geophysical consulting services can enhance your projects and open up new opportunities. Work with us to uncover the Earth's hidden potential and drive your projects toward success.



MKT-GNR-007
09052024

